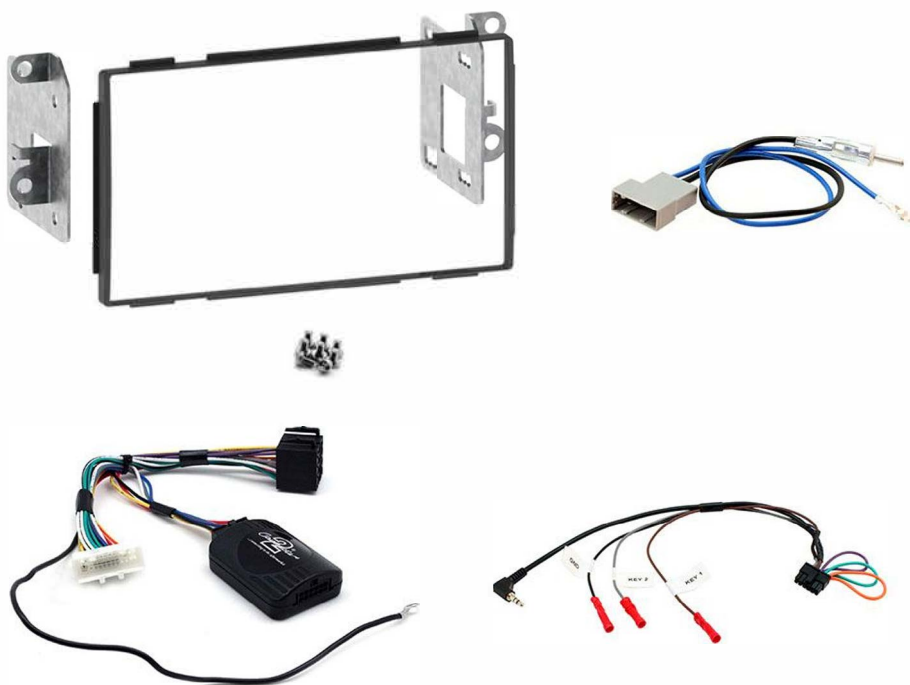


# THE COMPLETE INSTALLATION KIT NISSAN

## CTKNS03



### This Kit Contains:

Black Fascia Panel & Brackets  
Resistive Steering Wheel Control Interface  
Antenna Adapter  
Universal Patch Lead

[www.connects2.com](http://www.connects2.com)



The CTKNS03 Complete Installation Kit from Connects2 allows for the installation of a double DIN aftermarket stereo whilst retaining the vehicle's antenna connection, steering wheel control functions and factory phone buttons for call pick-up/hang-up.

## CONTENTS

PREPARATION	Page 3
KIT ASSEMBLY - PRELIMINARY	Page 3
PREPARING THE PATCH LEAD	Page 4
INSTALLING THE SWC INTERFACE	Page 5
WIRING COLOUR CODES	Page 6
SWC CONFIGURATION	Page 6
KIT ASSEMBLY - FINAL INSTALLATION	Page 7

## APPLICATION

Nissan  
Qashqai                      2007 - 2013

## PRIOR TO INSTALLATION

Read the manual prior to installation. Technical knowledge is necessary for installation. The place of installation must be free of moisture and away from heat sources. Please ensure that the correct tools are using during the installation to avoid damage to the vehicle or product. Application data and/or product functionality is subject to change at any time **Connects2 can not be held responsible for the installation of this product.**

## PREPARATION

**NB:** Before removing the factory radio, make sure that the vehicle ignition is turned off.

- 1 Firstly, use a panel removal tool to disengage the clips on the bottom climate control panel, following suit with the main dashboard panel. (Fig. A)

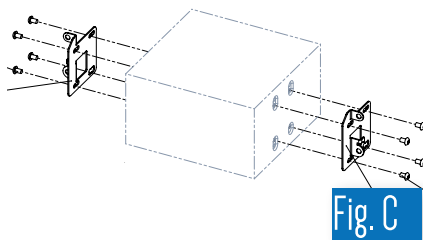


- 2 Next, remove the 4 screws that surround the head unit and remove it from the dashboard, disconnecting all wiring to the stereo (Fig. B)



## KIT ASSEMBLY - PRELIMINARY

- 3 Screw the square metal brackets onto each side of the aftermarket stereo as shown (Fig. C).



Progress to "Preparing the Patch Lead"



PREPARING THE PATCH LEAD

To correctly configure the interface for installation, the included patch lead (CTMULTILEAD.2) must be set according to the below information, in relation to the type of aftermarket stereo being installed in the vehicle.

See the diagram below for examples of which loops to cut and which connector type to use for all main brands of aftermarket stereo.

Configuration Assignments (1=Link made, 0=No Link)

J1	J2	J3	Systems	Connector
1	0	0	JVC	Jack/Key1
0	1	0	BEAT/Philips/Nakamichi	Key1
1	1	0	Clarion	Jack
0	0	1	Kenwood	Key1
1	0	1	Alpine	Jack
0	1	1	Panasonic	Key1
1	1	1	Sony/LG/Pioneer	Jack
1 (Pin12)	1 (Pin10)	0	Zenec	Key1
1	1	1	Chinese Learning Brands	Key1, Key2, GND

Pin Configuration

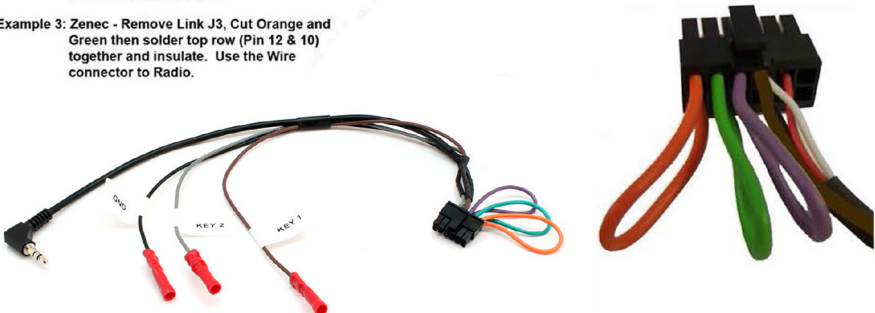
Pin 1	Description
1	Reserved
2	Reserved
3	Reserved
4	Analog 2 Swc
5	GND Swc
6	Analog 1 Swc
7	Link J3
8	Link J3
9	Link J2
10	Link J2
11	Link J1
12	Link J1

Here are some Examples of how to make various patch Leads:

Example 1: Alpine - Remove Link J2 then use the Jack connector into radio.

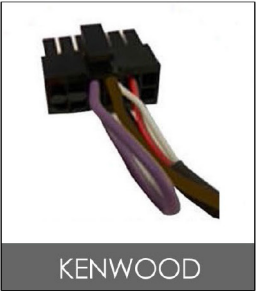
Example 2: Kenwood - Remove Link J1 and J2, use the wire connector to Radio.

Example 3: Zenec - Remove Link J3, Cut Orange and Green then solder top row (Pin 12 & 10) together and insulate. Use the Wire connector to Radio.



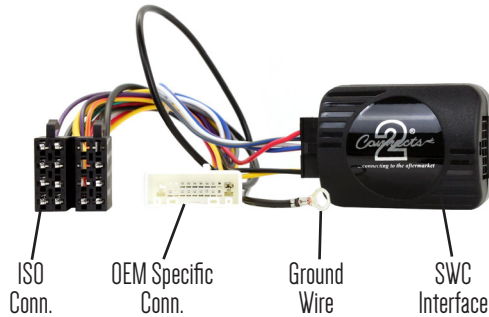
NB: When cutting loops on the CTMULTILEAD.2, please ensure that the bare wire ends are insulated

Examples:

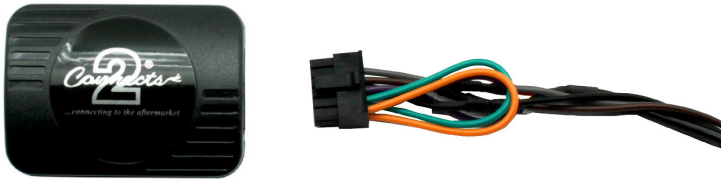


# INSTALLING THE STEERING WHEEL CONTROL INTERFACE

The steering wheel control functions of the original vehicle - which are lost during removal of the factory system - can be retained through the correct installation of the interface included in this kit. Please read these instructions carefully to ensure that your system will work well following the installation.



- 4** Connect the 12 Pin black connector of the stereo patch lead to the interface.



- 5** Connect the opposite end of the patch lead to the steering wheel control input on the back of the aftermarket stereo.

**NB:** This may be a 3.5mm jack plug or a wire input depending upon the stereo brand being fitted. Please see the stereo installation manual for further information on where to connect.

## IMPORTANT

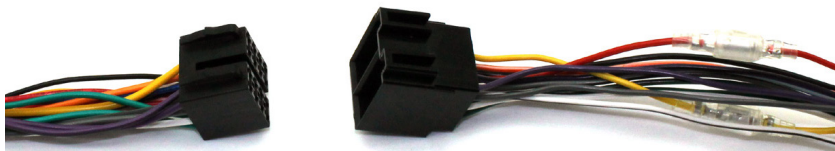
**This step must be completed before connecting power to the interface. Failure to do so may result in no steering wheel control function.**



- 6** Connect the 14 Pin black connector of the main wiring loom to the interface



- 7** Connect the male power/speaker ISO harness to the female power/speaker ISO harness from the aftermarket stereo. For aftermarket stereos without an ISO connector and for connecting optional inputs, please refer to "Wiring Colour Codes" below.



- 8** Connect the Antenna Adapter to the vehicle and the aftermarket stereo to retain the vehicle's antenna connection. Connect the blue wire to the stereo's 'remote' output.



## WIRING COLOUR CODES

PURPLE	RIGHT REAR SPEAKER +	YELLOW	12V PERMANENT
PURPLE/BLACK	RIGHT REAR SPEAKER -	BLACK	GROUND
GREEN	LEFT REAR SPEAKER +	RED	12V IGNITION
GREEN/BLACK	LEFT REAR SPEAKER -		
GREY	RIGHT FRONT SPEAKER +		
GREY/BLACK	RIGHT FRONT SPEAKER -		
WHITE	LEFT FRONT SPEAKER +		
WHITE/BLACK	LEFT FRONT SPEAKER -		

## SWC CONFIGURATION

ORIGINAL BUTTON	FUNCTION
VOLUME +	VOLUME +
VOLUME -	VOLUME -
SEEK UP	TRACK +
SEEK DOWN	TRACK -
SOURCE	SOURCE
SPEECH/PHONE ICON	PICK UP (SHORT PRESS)
SPEECH/PHONE ICON	HANG UP (LONG PRESS)

Continue to "Kit Assembly - Final Installation"



## KIT ASSEMBLY - FINAL INSTALLATION

**NB:** Temporarily rest the stereo inside the dashboard and and test functions (eg. radio reception etc) before pushing the stereo into place to complete fitting

- 9** Mount the head unit back into the dashboard with the pre-existing screws. Take the trim and place this inside the lip of the fascia panel (Fig. D).



Fig. D

- 10** With the trim panel set, proceed to replace the fascia panel and complete the installation (Fig. E).



Fig. E

## NOTES

This image shows a single sheet of white paper with horizontal ruling lines. The lines are evenly spaced and run across the width of the page. There are no margins, text, or other markings on the paper.