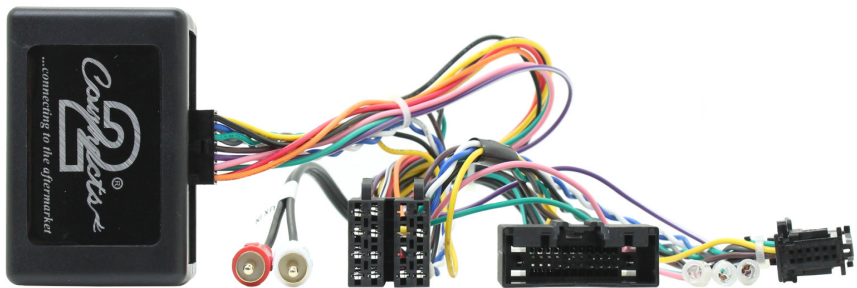




CTSFO005

Ford Steering Wheel Control Interface



Vehicle Application

Ford Fiesta (JA8) 2010 - 2012

For Vehicles with Red Display Only & 'OK' Button on Steering Wheel

Key Features

- Retains Steering Wheel Controls (if equipped)
 - Retains Menu Control Via SWC
- Provides Speed Pulse, Park Brake, Reverse Gear & Illumination

www.connects2.com

Designed and
Engineered
in the UK. 

The information provided in this document is subject to change without notice due to changes and/or improvements to the product/s.

ABOUT THIS PRODUCT

CTSFO005

CAN-Bus Steering Wheel Control Interface for Ford vehicles with red display, OK button on the steering wheel, Visteon original stereo and 24 Way connector

WIRING COLOUR CODES

Purple	Right Rear Speaker +	Yellow	Permanent 12V
Purple/Black	Right Rear Speaker -	Black	Ground
Green	Left Rear Speaker +	Red	Ignition 12V
Green/Black	Left Rear Speaker -	Orange	Illumination
Grey	Right Front Speaker +	Pink	Speed Pulse
Grey/Black	Right Front Speaker -	Green	Park Brake
White	Left Front Speaker +	Purple/White	Reverse
White/Black	Left Front Speaker -		

PRIOR TO INSTALLATION

*Read the manual prior to installation. Technical knowledge is necessary for installation. The place of installation must be free of moisture and away from heat sources. Please ensure that the correct tools are using during the installation to avoid damage to the vehicle or product. **Connects2 can not be held responsible for the installation of this product.***

TECHNICAL SUPPORT

Connects2 Ltd. want to provide a fast and suitable resolution to any problems encountered during installation of this product. To get in touch with our dedicated technical support team, please fill in a ticket at support.connects2.com and provide as much information as possible.

FOLLOW US ON SOCIAL MEDIA

for all the latest updates



[/CONNECTS2](https://www.youtube.com/channel/UC...)
Watch us on
YouTube



[/CONNECTS2](https://www.facebook.com/CONNECTS2)
Like us on
facebook



[CONNECTS2LTD](https://www.instagram.com/CONNECTS2LTD)
Follow us on
instagram



[@CONNECTS2](https://twitter.com/CONNECTS2)
Follow us on
twitter



[CONNECTS2LTD](https://www.linkedin.com/company/CONNECTS2LTD)
Follow us on
linkedin



[CONNECTS2BLOG.COM](https://www.connects2.com/blog)
Follow our blog on
wordpress

FITTING GUIDE

1. Remove and disconnect the original head unit.
2. Connect the 12 way molex connector of the head unit patch lead (supplied separately) to the interface.
3. Connect the opposite end of head unit patch lead to the head unit steering wheel control input on the back of the aftermarket head unit.

NB: This may be a 3.5mm jack plug or a wire input depending upon the head unit brand being fitted. Please see the head unit installation manual for further information on where to connect.

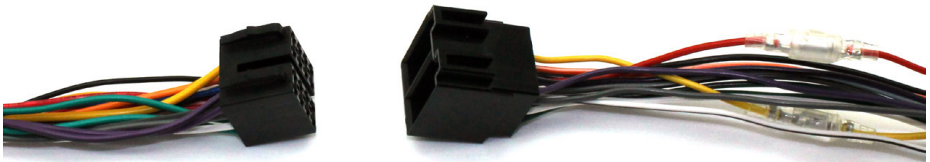
Important: This step must be completed before connecting power to the interface. Failure to do so may result in no steering wheel control function.



4. Connect the 14 way molex connector to the interface



5. Connect the male power/speaker ISO harness to the female power/speaker ISO harness from the aftermarket head unit. For aftermarket head units without an ISO connector, please refer to "Wiring Colour Codes" on Pg. 2.



FITTING GUIDE

6. Connect the female vehicle specific connectors on the harness to the male vehicle connector from the vehicle.

7. Remove the car display connector from the vehicle and plug into the interface (please remove the dust cover from the interface before making the connection).

8. Connect the display connector from the loom to the vehicle (the port previously occupied by the car display connector, removed in Step 7.)

Test head unit for correct operation

STEERING WHEEL CONTROL FUNCTIONALITY

Original Button	Function
Volume +	Volume +
Volume -	Volume -
Right Arrow	Track +
Left Arrow	Track -

ACCESSING THE MENU

1. To enter Menu Mode, hold the 'OK' button down for 3 seconds
2. To navigate the menu, use the Volume +/Volume - and Track +/Track - buttons. Push the 'OK' button to select an option
3. Menu Mode will be automatically exited after 10 seconds without a button press